

## The Transitional Shelter System

UniShelter is an integrated prefabricated semi-permanent building system which provides all the materials and fixings required to build accommodation for a single or multiple unit personal shelter.

A Fast-build, sustainable, medium term solutions to the recurring problem of providing transportable transitional accommodation for global humanitarian and infrastructure needs.



- ✓ not reliant on mechanised transport
- ✓ reusable and recyclable
- ✓ easily transportable, suitable for containers
- ✓ ideal for assembly by unskilled people
- ✓ self levelling palletised flat-pack kit
- ✓ easily erectable with its palletised base
- ✓ simple to deconstruct, relocate and re-erect
- ✓ designed for space saving storage
- ✓ modular construction, simple to modify for future needs
- ✓ quick to build using its integral flooring
- ✓ light weight, can be carried by 2-4 persons
- ✓ made from recycled PVC

### ReCrate: The sustainable stacking pallet system

The ReCrate offers a unique solution to the problems around transportation and erection of temporary shelter accommodation particularly when it is to occupy several different sites over its lifetime.

### Solving the environmental issues of:

Ecologically disposing of a pallet once it has been delivered to site; providing a flat, stable base onto which the accommodation can be erected; recycling the packaging waste; how to disassemble and re-pack the shelter for transportation to its next location.



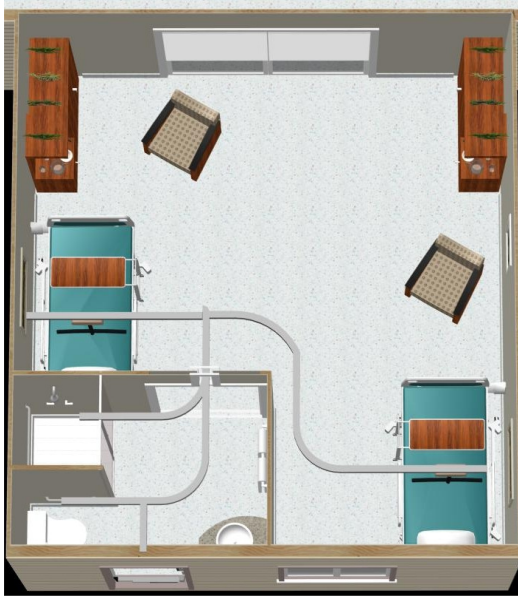
[www.unishelter.co.uk](http://www.unishelter.co.uk)

**Infrastructure Response Equipment Group**

[www.infreg.com](http://www.infreg.com)

## Field Hospitals

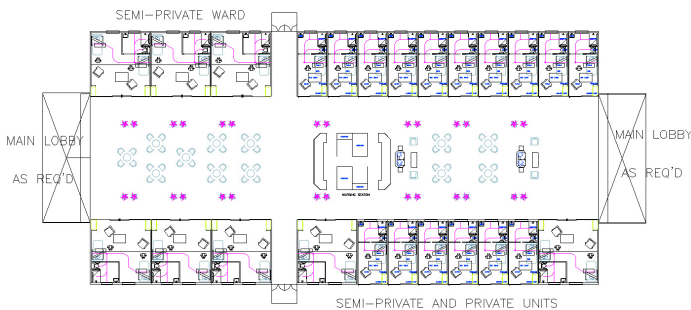
Semi-Private Units



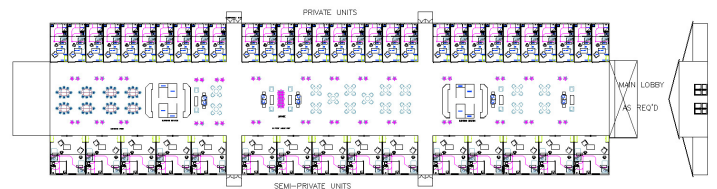
Private Single Units



32 Occupant Arrangement



60 Occupant Arrangement



### Key Features:

- Recycle, Reusable, Flexible Modular sustainable properties.
- Easily transportable, suitable for overseas operations.
- Quick and efficient commissioning, relocation and removal.
- Modular construction gives greater flexibility and functionality.
- Suitable for all climates and remote locations.
- Installation can be done in hazardous zones by army engineers utilising the “Lego” system.
- An obvious solution in the disaster relief areas as a temporary or permanent solution.
- A 60 unit arrangement with central facilities can be fully operational in minimal time and effort.
- Excellent solution to cope with the fluxuating needs of patients at any level of care.

[www.unishelter.co.uk](http://www.unishelter.co.uk)

**Infrastructure Response Equipment Group**

[www.infreg.com](http://www.infreg.com)