

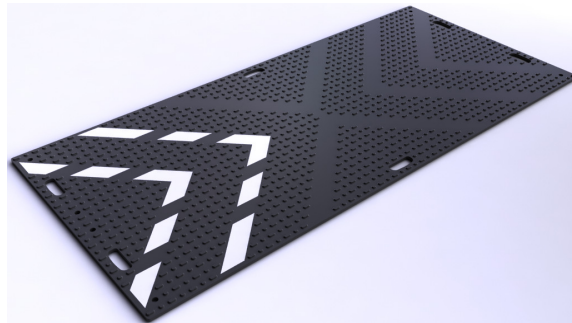
Ground protection and access

Zigma Ground Solutions Ltd designs, manufactures and supplies products that combine innovative technology and unique features.

We specialise in ground protection and access products. This means that our focus is on helping you to overcome the ground condition and access issues that can result in project delays and costs. We provide 'best in class' products that are designed for long-term performance.

We support your corporate objectives for health and safety, for avoiding environmental damage, for saving time and project costs, and for sustainability. Using our products will enable you to successfully deliver ground protection and temporary access requirements for a wide range of projects.

EuroMat® provides temporary ground protection and access solutions over soft or sensitive ground, and up to 80 tonnes. EuroMat Pedestrian, providing joint access for pedestrians (especially wheelchairs and buggies) and vehicles, useful for event access, incorporates the industry's most effective non slip, non-trip surface and reflective markings for night safety.



- Heavy duty ground protection/temporary access mat
- Fully metric 1.2m wide x 2.4m long and 12mm thick
- Weigh 36 kg; compression moulded, not extruded.
- 100% recycled or virgin polyethylene; 100% recyclable
- Unbreakable up to 80 tonnes*
- Extra hand cut outs – great for offloading from trucks
- UK designed, and manufactured in the UK/EU
- Avoids health and safety issues, simple and fast to install

EuroMats are light enough for two men to handle, prevent vehicles getting bogged down and significantly reduce damage to ground, including heritage and eco-sensitive areas, avoiding the need for reinstatement. The unique 'mud dispersing' chevron grip-surface is the most effective in the market and is ideal when the weather or ground conditions turn for the worse.

info@zigmagroundsolutions.com www.zigmagroundsolutions.com

Infrastructure Response Equipment Group

www.infreg.com

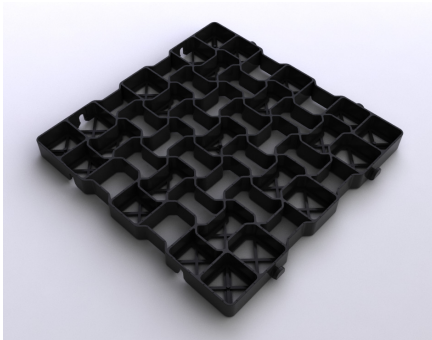
TuffTrak is a heavy duty roadmat providing access for plant, machinery and multiple vehicles. TuffTrak is manufactured from High Density Polyethylene and is designed to provide temporary roadways for plant and vehicles up to 140 tonnes or to create a temporary road for multiple vehicles and cars at outdoor events.



Specifications

- Dimensions – 3m x 2.5m
- Thickness – 40mm
- Weight – 290 kg
- Connection - Quick fit bolts and connecting plates or straps

GeoGrid® is a new ground reinforcing tile & cellular paving system. GeoGrid® has a simple interlocking design for fast installation providing ground access, roadways and trackways (and can be lifted four at a time directly from a pallet as pre-connected 1 m² units). This will save you time and money. It can be filled with aggregate or soil / grass to provide a high quality parking area or pathway for areas with high pedestrian or vehicle movement.



GeoGrid® has a unique geometric design and its robust construction allows for excellent load strength and optimum expansion and contraction. GeoGrid® can withstand a 30 tonnes axle or point load and 350 tonnes per square metre and provides an economical solution for permanent and semi-permanent access ways and car parks, especially if there are flooding or water dispersion problems.

info@zigmagroundsolutions.com

www.zigmagroundsolutions.com

Infrastructure Response Equipment Group

www.infreg.com